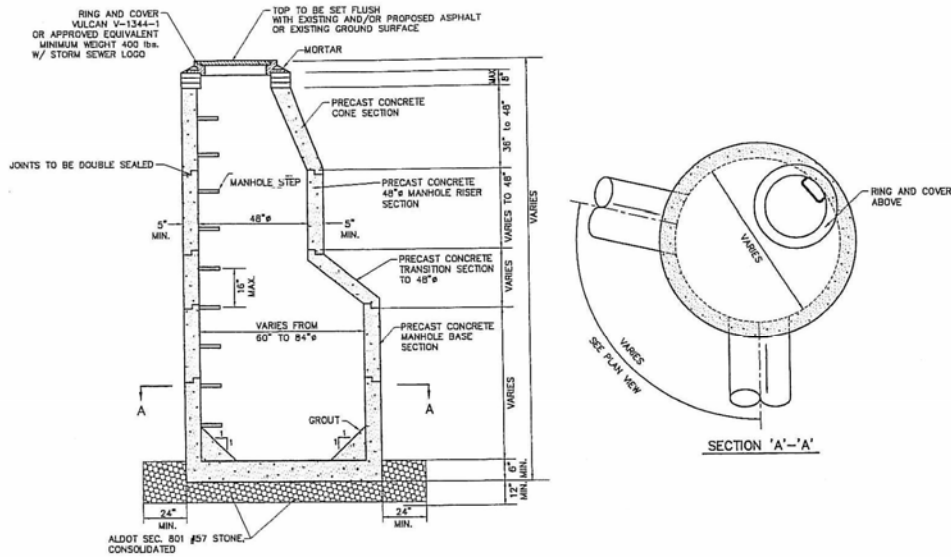




Section 4: Standard Drawings



STORM STRUCTURE JUNCTION BOX (PRECAST MANHOLES)
N.T.S.

- NOTE FOR ALL CONCRETE BOXES:**
1. STEPS REQUIRED FOR STRUCTURES OVER 4 FEET DEEP LOCATION TO BE APPROVED BY PROJECT ENGINEER.
 2. ALL CONCRETE TO BE 3,000 P.S.I.