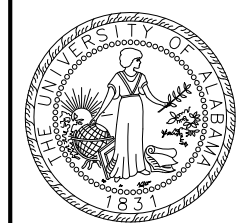
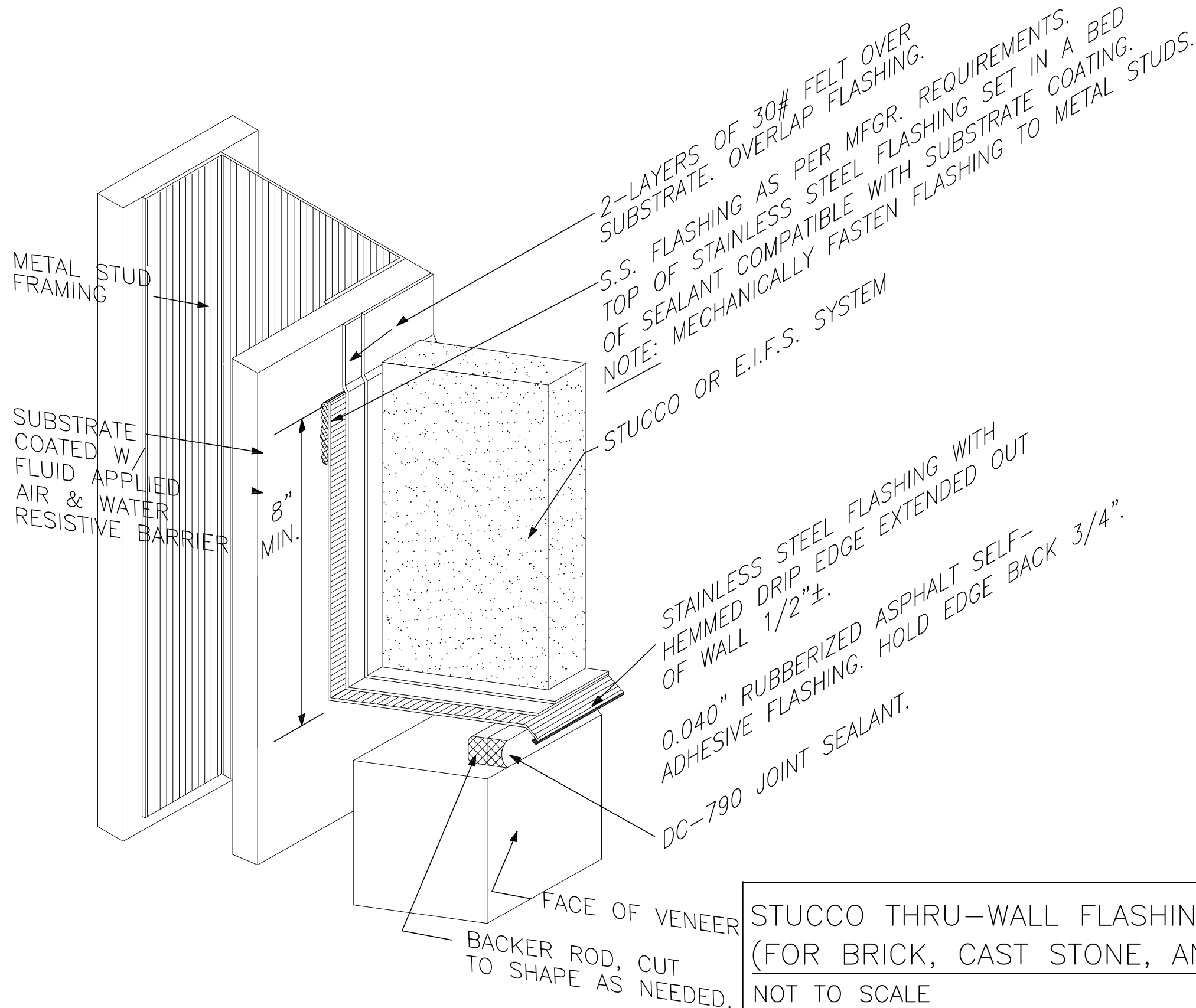


TYPICAL THRU-WALL FLASHING DETAIL
 (AT SHELF ANGLE CONDITIONS FOR
 BRICK, CAST STONE, AND STONE VENEER)
 NOT TO SCALE





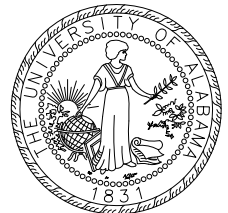
STUCCO THRU-WALL FLASHING DETAIL
 (FOR BRICK, CAST STONE, AND STONE VENEER)
 NOT TO SCALE

THE UNIVERSITY OF
ALABAMA

**UNIVERSITY OF ALABAMA FACILITIES
 PLANNING DEPARTMENT**
 1205 14th Street Tuscaloosa, AL 35401
 PHONE: (205) 348-8158 FAX: (205) 348-1588

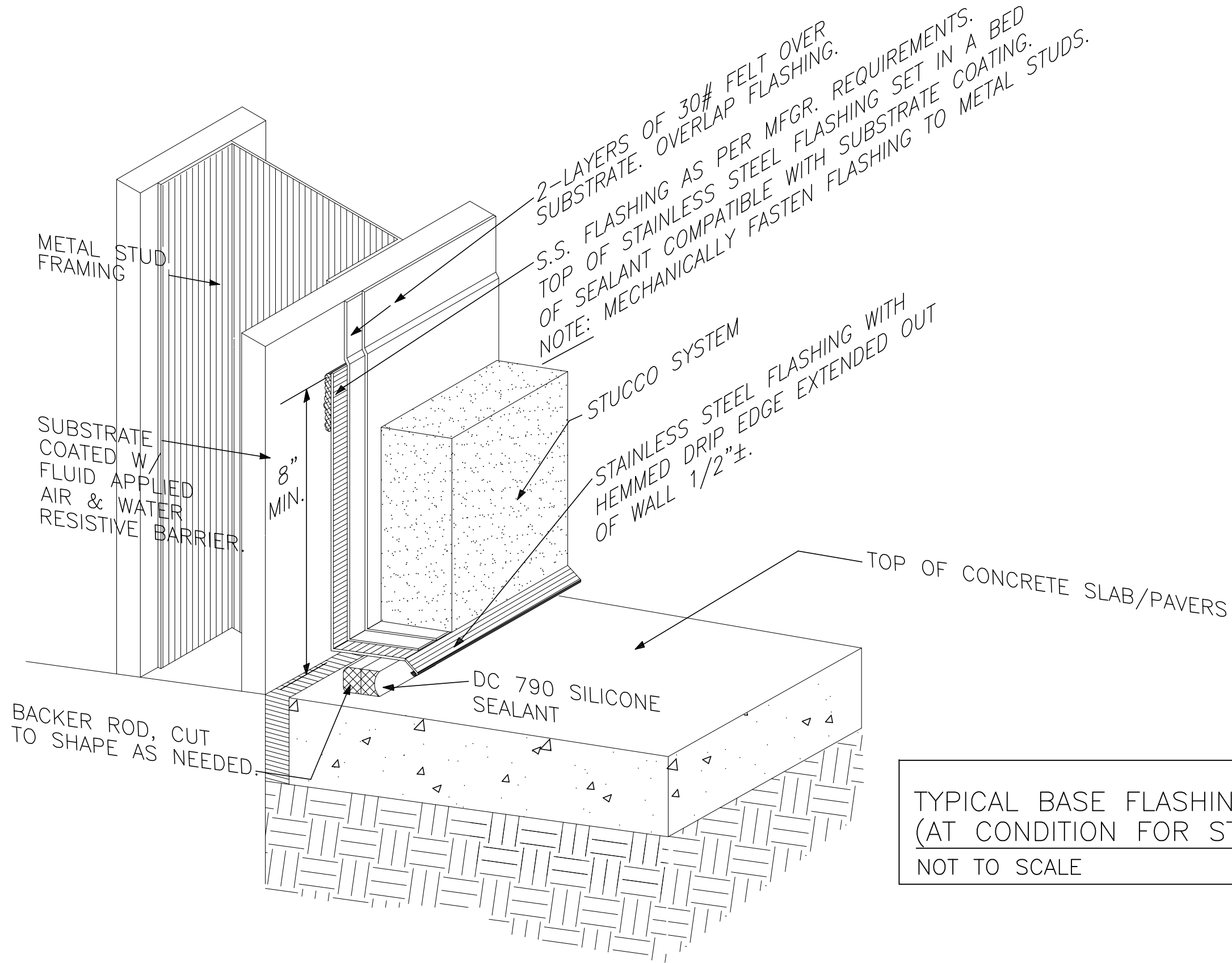
Project:
 CONSTRUCTION ADMINISTRATION
 DESIGN GUIDELINES

Sheet Title:
 STUCCO THRU-WALL FLASHING



issue date:
 3/29/2012

CSI division:



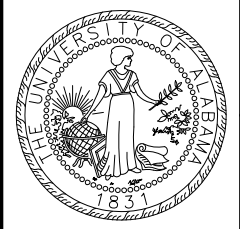
TYPICAL BASE FLASHING DETAIL
(AT CONDITION FOR STUCCO)
NOT TO SCALE

THE UNIVERSITY OF
ALABAMA

UNIVERSITY OF ALABAMA
FACILITIES
PLANNING DEPARTMENT
1205 14th Street Tuscaloosa, AL 35401
PHONE: (205) 348-8158
FAX: (205) 348-1588

Project:
CONSTRUCTION ADMINISTRATION
DESIGN GUIDELINES

Sheet Title:
STUCCO BASE FLASHING



issue date:
3/29/2012

CSI division: