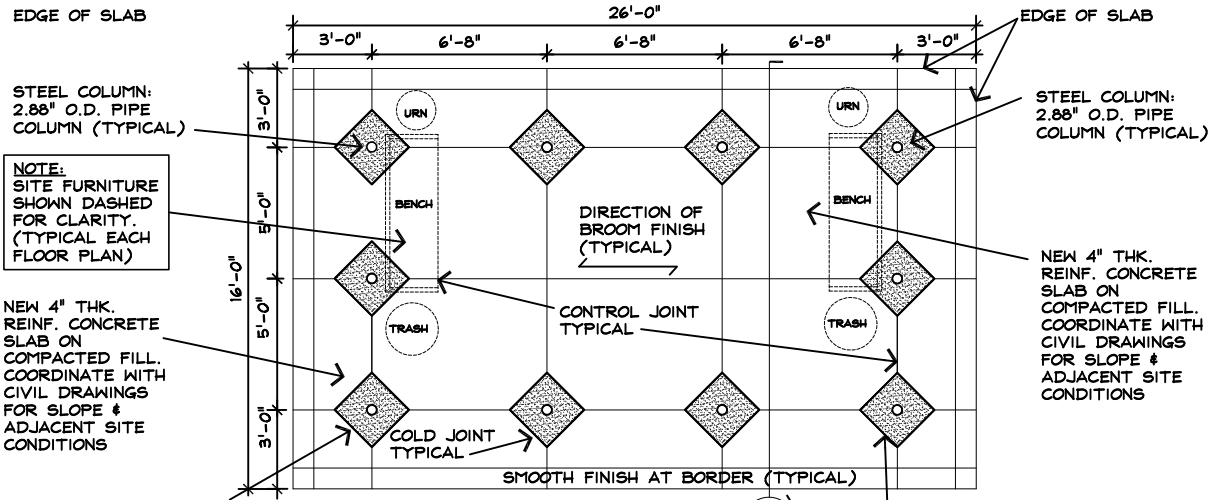


1  
A-1 FOUNDATION PLAN



2  
A-1 FLOOR PLAN

PLANS

BUS SHELTER CONCEPT  
DESIGN GUIDELINES

Sheet Title:

THE UNIVERSITY OF  
**ALABAMA**

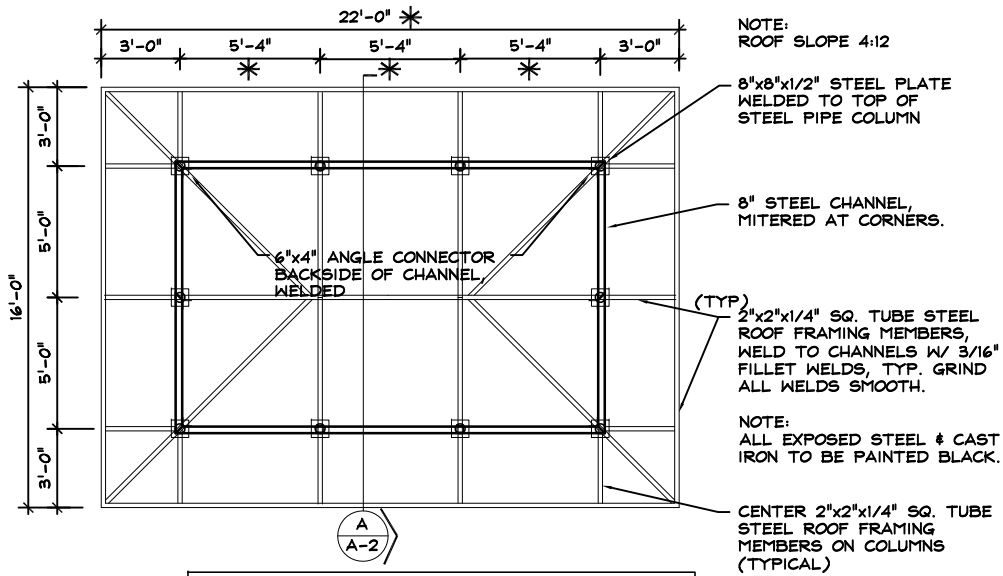
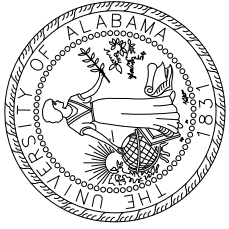
**FACILITIES**  
PLANNING DEPARTMENT  
1200 14th Street  
Tuscaloosa, AL 35401  
PHONE (205) 348-5155  
FAX (205) 348-5188

issue date:

7/13/10

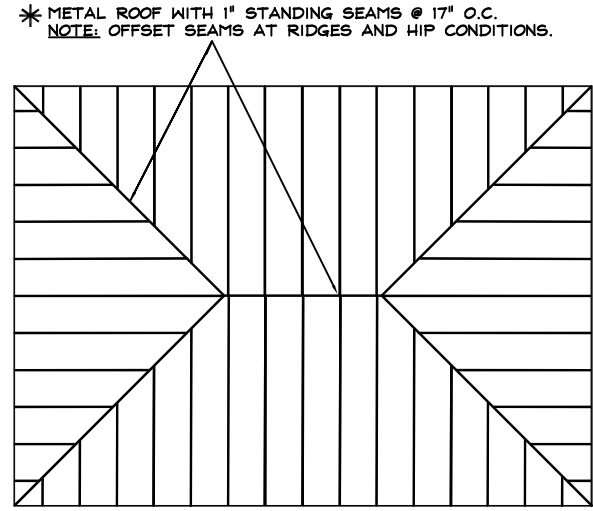
Sheet:

A-1



\* NOTE: THESE DIMENSIONS VARY PER PLAN TYPE. SEE THIS SHEET FOR SPECIFIC DIMENSIONS.

1 FRAMING PLAN (TYPICAL)  
A-2



\* NOTE: ROOF DIMENSIONS VARY PER PLAN TYPE. SEE THIS SHEET FOR SPECIFIC PLAN DIMENSIONS.

2 ROOF PLAN (TYPICAL)  
A-2

PLANS

Sheet Title:

BUS SHELTER CONCEPT  
DESIGN GUIDELINES

Project:

THE UNIVERSITY OF  
**ALABAMA**

**FACILITIES**  
PLANNING DEPARTMENT  
1205 14th Street  
Tuscaloosa, AL 35401  
PHONE (205) 348-5155  
FAX (205) 348-5188

issue date:

7/13/10

Sheet:

A-2

2 of 5



SECTION

BUS SHELTER CONCEPT  
DESIGN GUIDELINES

Sheet Title:

Project:

THE UNIVERSITY OF  
**ALABAMA**



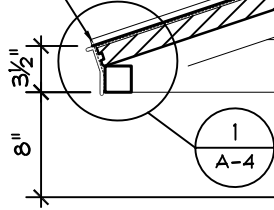
issue date:

7/13/10

Sheet:

A-3

EXTEND UNDERLAYMENT  
DOWN FACE OF TUBE STEEL  
BEHIND METAL DRIP/EDGE  
FLASHING



BASE PLATE:  
3/4x8x8

2"X6" T#G DECKING SCREW  
ATTACHED TO TUBE FRAMING.

2"X2"X1/4" SQ. STEEL TUBE  
CENTERED ON COL. BETWEEN  
TRUSSES (TYP)

CHANNEL:  
MC 8x18.7

(B) SECTION  
A-3

NOTE: COORDINATE WITH  
ELECTRICAL FOR CONDUIT  
LOCATION REQUIRING HOLE  
IN COLUMN BASE PLATE.  
(TYPICAL)

COLUMN:  
2 1/2" XX-STRONG  
(2.88" O.D)

BASE PLATE:  
3/4x8x8

ANCHOR RODS:  
(4) 3/4" A307 A  
HEADED

CONCRETE SLAB:  
4" THK, 3000 PSI  
WWR:  
6x6 W2.9/2.9

24" SQUARE BLOCKOUT @  
EACH COLUMN (TYPICAL)

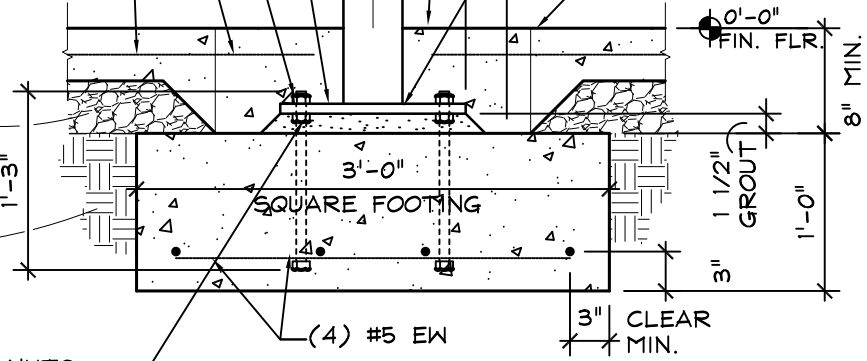
3" MIN.  
COVERAGE

COLD JOINT (TYPICAL)

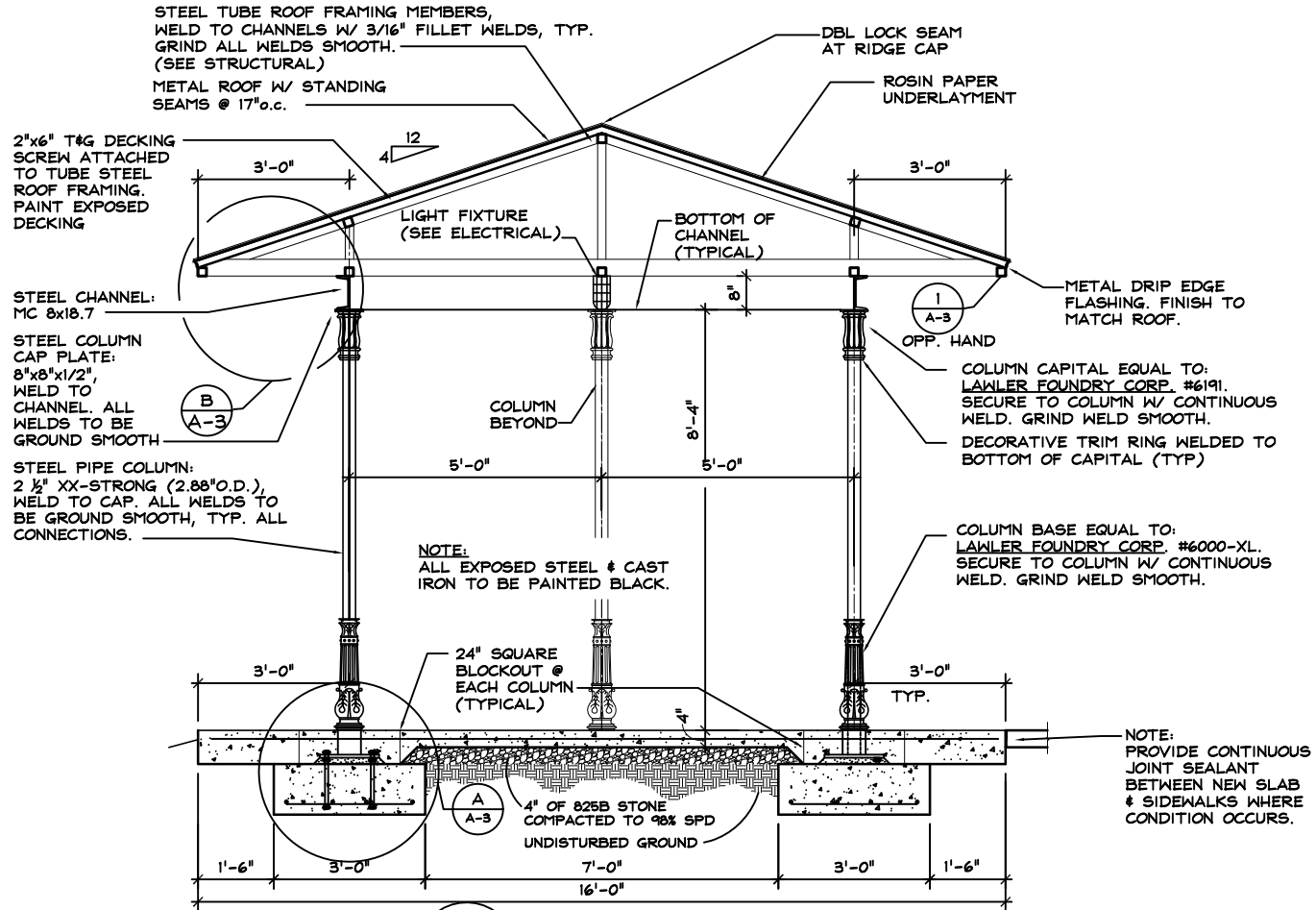
4" OF 825B STONE  
COMPACTED TO 98% SPD

UNDISTURBED  
GROUND

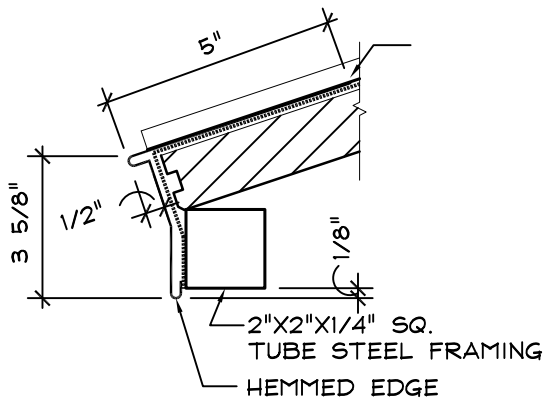
LEVELING NUTS



(A) SECTION  
A-3



**A SECTION**  
A-4



**1 DETAIL**  
A-4

SECTION, DETAIL

BUS SHELTER CONCEPT  
DESIGN GUIDELINES

Sheet Title:

Project:

THE UNIVERSITY OF  
**ALABAMA**

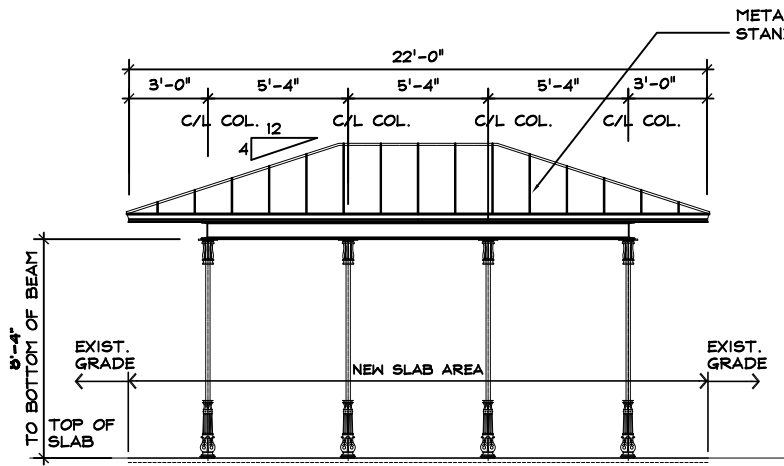
**FACILITIES  
PLANNING DEPARTMENT**  
1200 14th Street  
Tuscaloosa, AL 35401  
PHONE (205) 348-5155  
FAX (205) 348-5188

issue date:

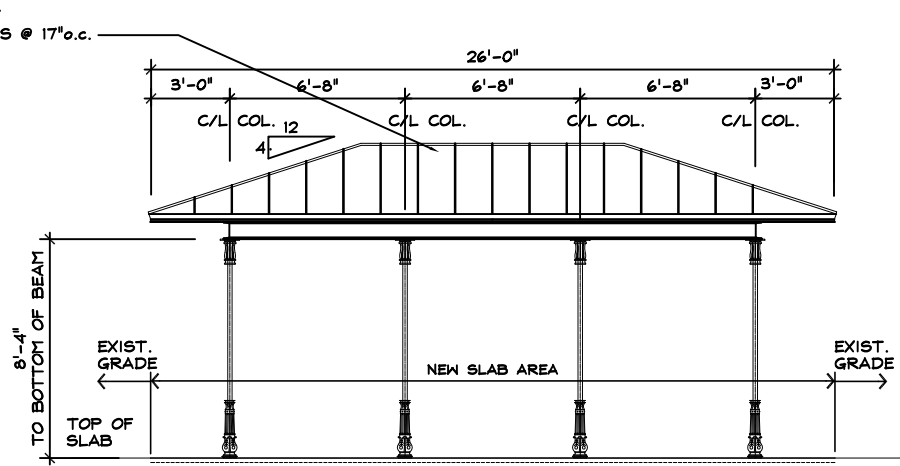
7/13/10

Sheet:

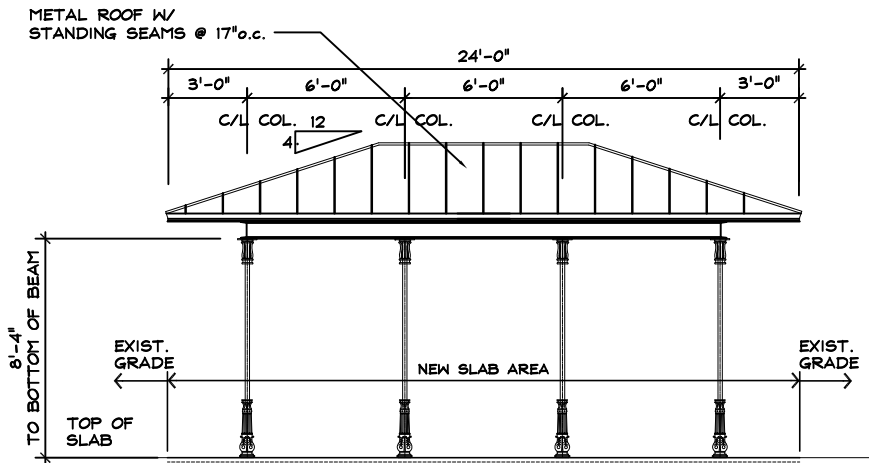
A-4



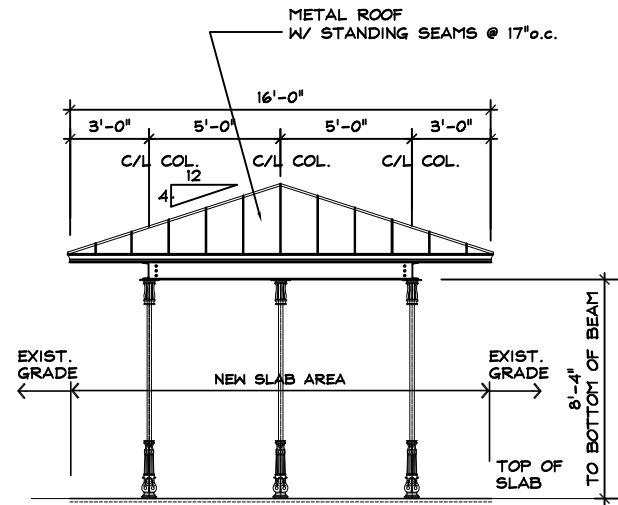
**A**  
A-5 ELEVATION-TYPE 1



**B**  
A-5 ELEVATION-TYPE 2



**C**  
A-5 ELEVATION-TYPE 3



**D**  
A-5 TYPICAL SIDE ELEVATION

ELEVATIONS

BUS SHELTER CONCEPT  
DESIGN GUIDELINES

Sheet Title:

Project:

THE UNIVERSITY OF  
**ALABAMA**

**FACILITIES**  
PLANNING DEPARTMENT  
1200 14th Street  
TUSCALOOSA, AL 35401  
PHONE (205) 348-5155  
FAX (205) 348-5188

issue date:

7/13/10

Sheet:

A-5

5 of 5